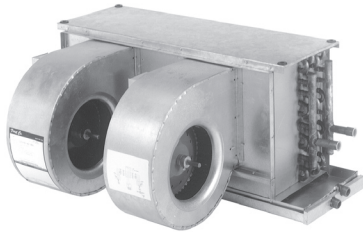


NOW WITH
SLOPED DRAIN PAN



HYX / PHYX Series

Horizontal Recessed
Ceiling Fan Coils
3 - 5 Tons Cooling
Cooling Only (No Electric Heat)



HYX Series
(HYB shown)

The space-saving **HYX / PHYX** Series fan coils are only 16 1/2" high, allowing them to recess in a ceiling. Recessed ceiling fan coils save valuable floor space and eliminate costly "equipment" closets.

The **HYX** is an "uncased" ceiling fan coil. The **PHYX** is the same product but with a factory installed return air plenum. With the **PHYX** model, return air can be field ducted directly to the fan coil plenum. The **PHYX** plenum can also be field converted from end return to bottom return.

The **HYX / PHYX** fan coils are compatible with most split-system condensing units and heat pumps. Contact the factory for correct matches with outdoor units.

All **HYX / PHYX** fan coils include a 240/24V transformer and are completely prewired. Sloped drain pans allow positive drainage of condensate.



PHYX Series
(PHYB shown)
(with return air plenum)

Standard Features:

- Drain pan has 3/4" NPT primary and secondary (overflow) fittings
- 240V motor, 24V controls
- Copper tube/aluminum fin cooling coils
- Insulated and coated galvanized steel drain pan is sloped for proper drainage
- Higher efficiency cooling coil with piston-type metering device. Contact factory for correct match with outdoor unit
- Throw away filter (PHYX only)
- 4-speed motors

Optional Accessories: (Field installed)

- Condensate overflow switch (Part # **SS3**)
- Factory or field installed TXV's (R22 or R410A)

HYX Series

3, 4, and 5 tons

(See P. 4 for Model Numbers)

BLOWER DATA														
UNIT MODEL	NOM. COOL BTUH	HP	*AMPS (240V)	MIN. CKT. AMPACITY		MAX. CKT. PROTECTION		CFM vs. EXTERNAL STATIC PRESSURE						
				230	208	230	208	BLOWER SPEED	0.1	0.2	0.3	0.4	0.5	0.6
36HYX0	36,000	1/5	4.4	5.5	5.5	15	15	HIGH	1530	1500	1450	1400	1360	1300
								MED. HI	1200	1150	1110	1060	1010	950
								MED. LOW	930	880	830	780	720	650
								LOW	650	580	500	430	360	300
48HYX0	48,000	1/5	4.4	5.5	5.5	15	15	HIGH	1700	1650	1600	1550	1490	1420
								MED. HI	1320	1260	1200	1130	1050	960
								MED. LOW	1040	970	890	810	720	620
								LOW	680	590	500	400	320	220
60HYX0	60,000	1/4	5.8	7.5	7.5	15	15	HIGH	2250	2200	2140	2080	2020	1950
								MED. HI	1760	1680	1620	1550	1480	1400
								MED. LOW	1490	1380	1310	1230	1150	1050
								LOW	1140	1020	930	840	740	640

FEATURES

1. 4-speed direct drive motors
2. 1/2" copper tubing
3. Piston-type metering device for heat pump or straight cool operation
4. Primary and secondary condensate drains on one end
5. Rubber isolation grommets
6. 208-240/1/50-60Hz. motors (2)
7. 24V transformer

Notes:

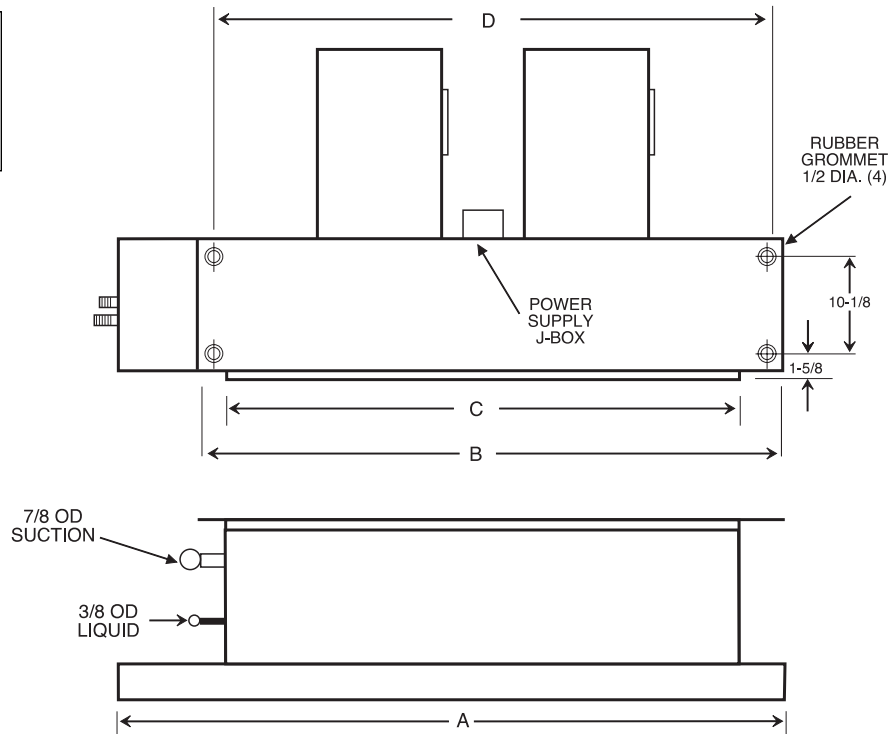
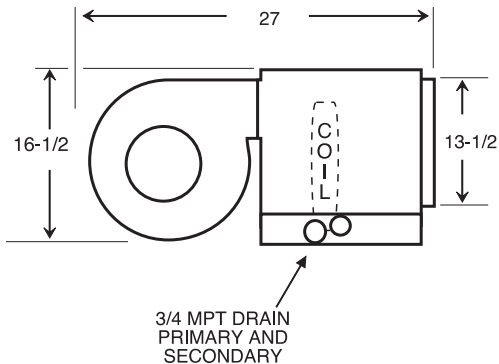
* Amps is total for (2) motors

* Blower data is with 240V/1PH/60Hz. motors

PHYSICAL DIMENSIONS				
MODEL	A	B	C	D
36HYX	41	32-1/2	28	31-1/4
48HYX	51	42-1/2	38	41-1/4
60HYX	60	51-1/2	47	50-1/4

Approved for installation with 0" clearance to combustible materials

In keeping with its policy of continuous progress and product improvement, First Operations reserves the right to make changes without notice. Maintenance for all First Co. products is available under "Product Maintenance" at www.firstco.com.



PHYX Series (HYX with plenum)

3, 4, and 5 tons

(See P. 4 for Model Numbers)

BLOWER DATA														
UNIT MODEL	NOM. COOL BTUH	HP	*AMPS (240V)	MIN. CKT. AMPACITY		MAX. CKT. PROTECTION		CFM vs. EXTERNAL STATIC PRESSURE						
				230	208	230	208	BLOWER SPEED	0.1	0.2	0.3	0.4	0.5	0.6
3P6PHYX0	36,000	1/5	4.4	5.5	5.5	15	15	HIGH	1480	1440	1400	1350	1300	1240
								MED. HI	1160	1110	1060	1010	960	890
								MED. LOW	910	860	800	740	670	600
								LOW	620	550	490	420	350	280
48PHYX0	48,000	1/5	4.4	5.5	5.5	15	15	HIGH	1640	1590	1540	1480	1410	1340
								MED. HI	1240	1210	1140	1060	980	900
								MED. LOW	960	920	850	780	700	620
								LOW	620	590	500	420	330	240
60PHYX0	60,000	1/4	5.8	7.5	7.5	15	15	HIGH	2190	2130	2060	1990	1920	1840
								MED. HI	1700	1630	1560	1480	1400	1310
								MED. LOW	1410	1340	1260	1180	1100	1010
								LOW	1060	980	900	810	720	610

FEATURES

1. 4-speed direct drive motors
2. 1/2" copper tubing
3. Piston-type metering device for heat pump or straight cool operation
4. Primary and secondary condensate drains on one end
5. Return air plenum - field convertible from end return to bottom return
6. Throw away filter
7. Rubber isolation grommets
8. 208-240/1/50-60Hz. motors (2)
9. 24V transformer

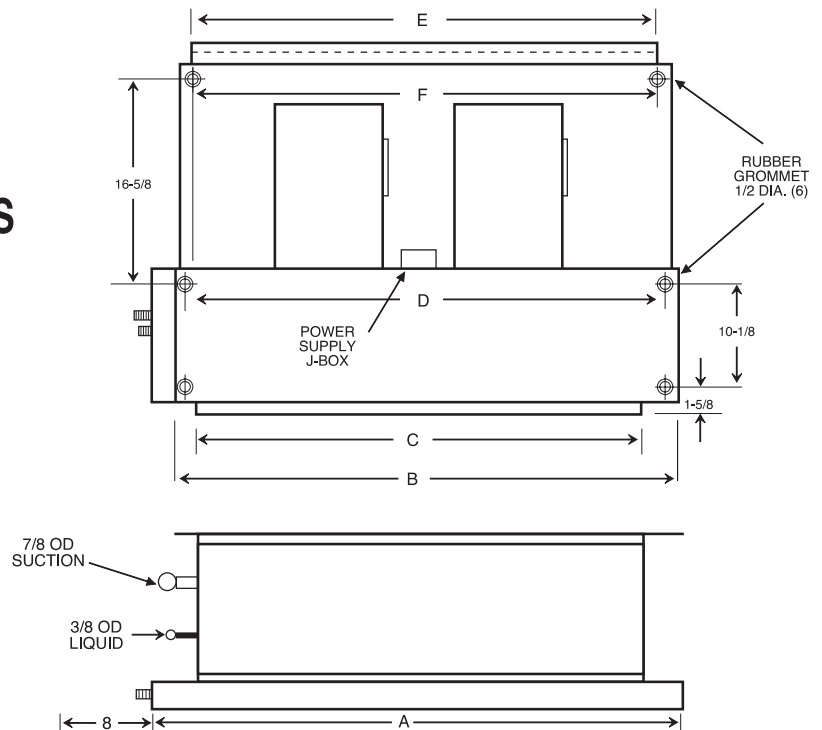
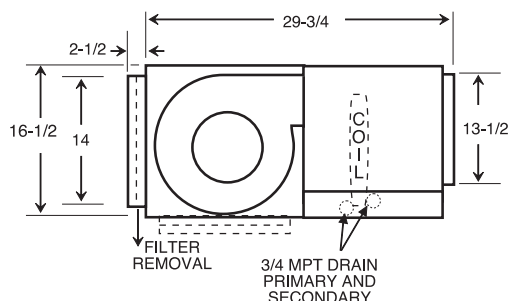
Notes:

- * Amps is total for (2) motors
- * Blower data is with 240V/1PH/60Hz. motors

PHYSICAL DIMENSIONS							
MODEL	A	B	C	D	E	F	FILTER SIZE
36PHYX	41	32-1/2	28	31-1/4	28-1/4	28	14 X 28 X 1
48PHYX	51	42-1/2	38	41-1/4	38-1/4	38	14 X 38 X 1
60PHYX	60	51-1/2	47	50-1/4	47-1/4	47	14 X 47 X 1

Approved for installation with 0" clearance to combustible materials

In keeping with its policy of continuous progress and product improvement, First Operations reserves the right to make changes without notice. Maintenance for all First Co. products is available under "Product Maintenance" at www.firstco.com.



Model Numbers:

		FACTORY INSTALLED TXV'S	
MODEL SIZE (BTU)	MODEL (PISTON)	MODEL (R22 TXV)	MODEL (R410A TXV)
36,000	36(P)HYX0	36(P)HYX0 w/R22 TXV	36(P)HYX0 w/R410A TXV
48,000	48(P)HYX0	48(P)HYX0 w/R22 TXV	48(P)HYX0 w/R410A TXV
60,000	60(P)HYX0	60(P)HYX0 w/R22 TXV	60(P)HYX0 w/R410A TXV

All TXV's are approved for cooling only or heat pump operation.

NOTE:

Expansion valve requirement depends on the selected outdoor unit. Go to www.firstco.com/EfficiencyRatings.aspx or contact the factory for assistance.

ACCESSORIES - (all field installed)

EXPANSION VALVE KITS (Field installed) (cooling only or heat pump)	
PART NUMBER	FITS
R22	
9EVR22-2	36(P)HYX
9EVR22-3	48/60(P)HYX
R410A	
9EVR410-1	36(P)HYX
9EVR410-2	48/60(P)HYX

NOTES:

1. Above expansion valve kits are approved for both cooling only (non heat pump) and heat pump applications.
2. Valves are external equalizing, internal bleed.
3. Valves have screw-on connections.

In keeping with its policy of continuous progress and product improvement, First Operations reserves the right to make changes without notice. Maintenance for all First Co. products is available under "Product Maintenance" at www.firstco.com.